

ELECTRIC HALOGEN MARQUEE HEATER

Also suitable for gazebos, party tents, awnings and pagodas.

1000 W

WARM GLOW HEATER



This product will clamp to any strong structure from 12.5mm to 50mm diameter surface which makes it ideal for awnings, marquees, party tents, pagodas and gazebos etc.

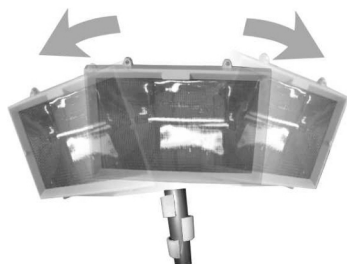
- Easy attachable bracket
- Allows you to spend more time outside
- Provides targeted heat, has a warm glow
- Includes 5 metres of heavy duty cable and plug
- No fumes or smell
- Efficient and very economical to run



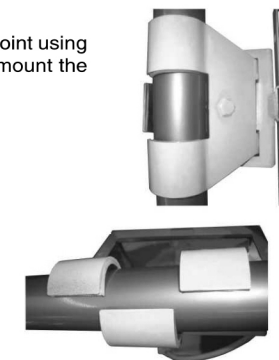
IMPORTANT: Please read before proceeding

You must ensure the clamp is tight and the heater is secure. DO NOT attach heater to any structure that is not stable and could be affected by wind or any adverse weather conditions. Ensure no flammable material or other fabrics are within 6" of the body of the heater. Ensure cable is secure and cannot be tripped over. Heater is mounted 8 feet (2.4metres) from the floor. The heater should be plugged into a circuit breaker with earth trip. Changes to the installation of this appliance should only be carried out by someone with prior knowledge of electrical installations. If you are in any doubt, we strongly recommend you contact a fully qualified electrician.

Once you have decided on a suitable location fix the heater to its mounting point using the universal fixing bracket clamp. This clamp is designed so that you can mount the heater vertically or horizontally. You can then alter the direction of the heater by use of the 8mm threaded bolt on the clamp.



Heater may be adjusted to desired angle.



Once the clamp has been firmly fixed and you are satisfied with the position of the heater, use the supplied elasticated bungee toggle straps to secure the marquee heater cable to the structure.

HEALTH AND SAFETY NOTE

Do not cover

Do not attach adjacent to any inflammable material

The heater unit must be fitted at least 8 feet from the floor

Must be fitted to a strong frame by a qualified competent person

Keep out of reach from children at all times.

Ensure heater is disconnected before cleaning.

Do not obstruct or cover the heater when in use. Ensure mains cable is not touching body of heater. Only connect to mains when installation is complete.

Do not use extension cable as this can cause overheating and a risk of fire.

Do not touch heater when turned on, always turn off and allow to cool down.

Ensure voltage shown on the specification plate corresponds to your mains supply.

Disconnect from mains when fitting or replacing filament and ensure filament is cool. Do

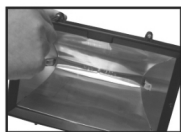
not handle the filament with bare hands as this can shorten the life of the filament.



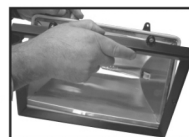
2"4m

Replacing Filament

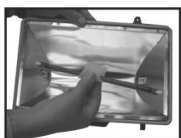
The heater comes with a 1000w heater element, should you need to replace or change the filament please ensure heater is disconnected from the mains and follow steps 1 to 4 below.



- ① Remove screws from above mesh front.

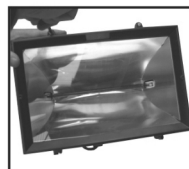


- ② Carefully remove the mesh hinged front and place safely to one side.



- ③ Locate and fit halogen filament ensuring not to touch the filament itself with bare hands. However, if accidentally touched, please clean with methylated spirits to prevent marks burning into the quartz which will reduce the life of the filament.

- ④ Once tube is correctly inserted locate mesh front and tighten screws.



We recommend that a waterproof socket be fitted if the heater is to plugged into an outside socket.

Technical Specification

Voltage	AC220~240V
Total Power (kW)	1000w
Phase Supply	Single (220-240V)
Amps per phase (A)	5
Minimum distance from floor	2.4m
Approx dimensions - W x H x D	34x25.5x17.5
Approx weight	3.5kg
Insulation Class	1

Maintenance and Cleaning

Disconnect from mains before attempting any maintenance or cleaning.

After approximately 80-100 hours we recommend removing the mesh front cover and wiping the reflector with a lint-free cloth. This will ensure optimum heat.



www.galatent.co.uk

**Gala Tent Ltd,
Unit 10, Farfield Park,
Manvers, Wath-Upon-Dearne,
Rotherham, S63 5DB**

**Telephone:
+44(0)871 423 4252**